



SAMS ENTERPRISE

Brand guidelines 1.1 / November 2021

Enterprise Logo

This is the only logo format.

1.



2.



3.



4.



1. **On white**

2. **On SAMS
Enterprise BG**

3. **Black only**

Only to be used on single colour designs (eg black and white newspaper job listing).

4. **White only**

Use on top of photos (eg on a promotional stand). If the white logo is not legible on top of the image, use a colour overlay to darken the image.

Enterprise Typography

HEADING

Nunito Light
Sentence case - ie only capitalise
the first letter (unless referring to a
name or place)
Tracking -10
Kerning - Optical

Sample
of text used
in heading

SUB HEADING

Brown ST
ALL Caps - ie capitalise full
heading

SAMPLE OF TEXT
USED IN HEADING

BODY COPY

Nunito light, Nunito Regular
or Open sans
(Semi-Bold and Italic also
available) Sentence case

Sample of text used in body text. Sample
of text used in body text. Sample of text
used in body text. Sample of text used in
body text. Sample of text used in body
text. Sample text. Sample of text used
in body text.

Enterprise Colour palette



Primary colour palette



SAMS BG

C: 89 M: 61 Y: 26 K: 10
R: 41 G: 88 B: 132
#2A5883

SAMS ENTERPRISE CTA

C: 52 M: 0 Y: 84 K: 0
R: 141 G: 192 B: 78
#8DC04E

White

C: 0 M: 0 Y: 0 K: 0
R: 255 G: 255 B: 255
#FFFFFF

Secondary colour palette



Burnt Orange

C: 4 M: 64 Y: 84 K: 0
R: 231 G: 115 B: 52
#E77334

Bright Yellow

C: 0 M: 20 Y: 90 K: 0
R: 255 G: 205 B: 28
#FFCD1C

Deep Ocean

C: 68 M: 14 Y: 0 K: 63
R: 30 G: 82 B: 94
#1E525E

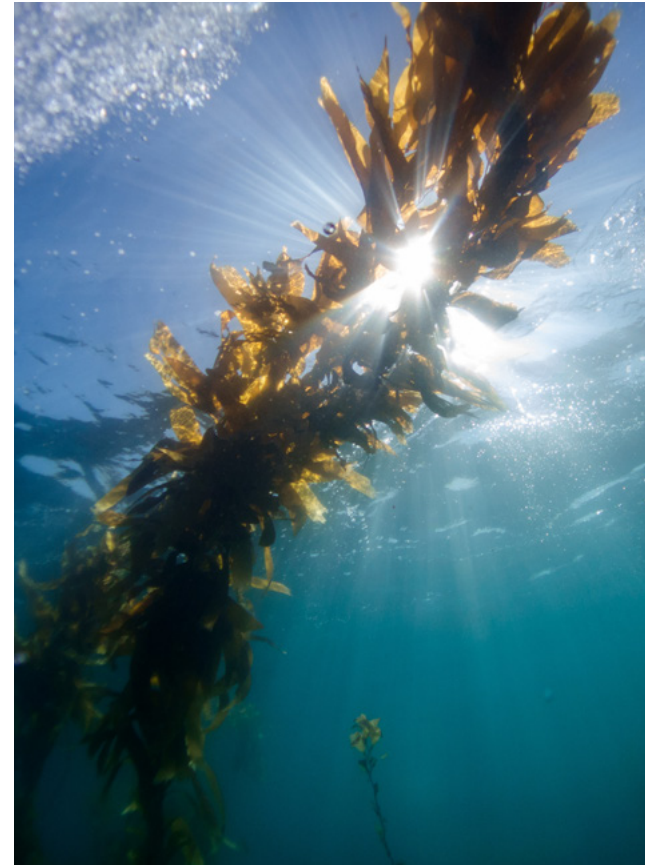
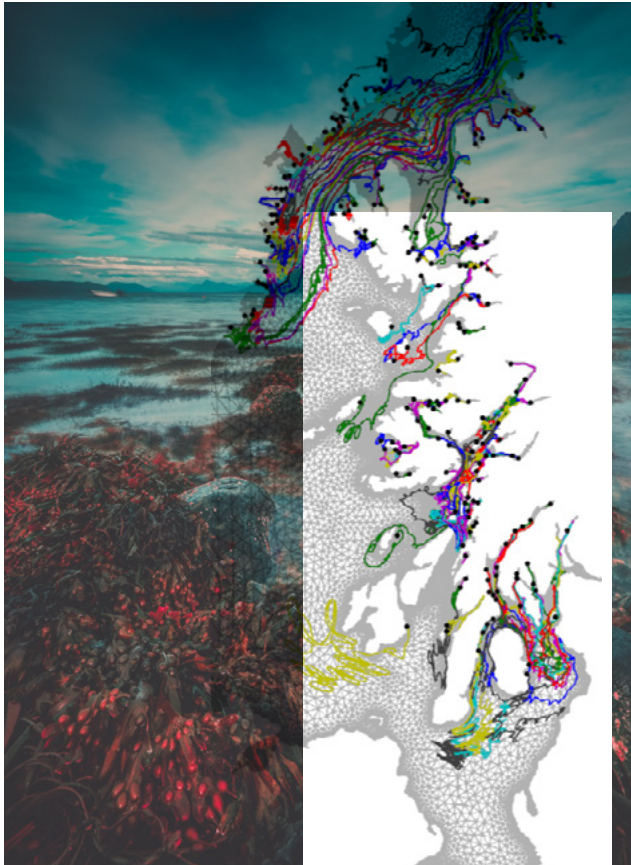
Coral Pink

C: 11 M: 97 Y: 56 K: 2
R: 210 G: 30 B: 76
#D21E4C

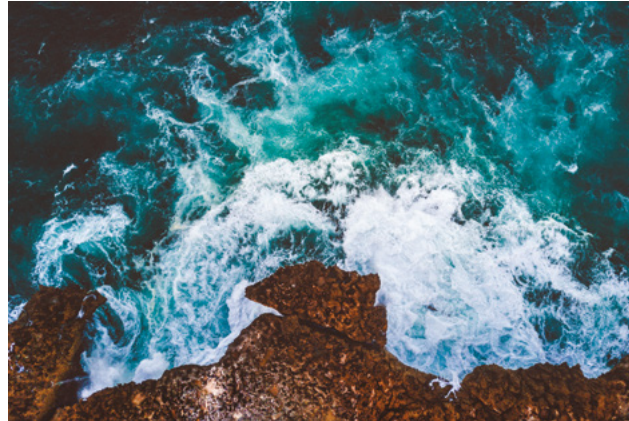
Wave Blue

C: 65 M: 0 Y: 11 K: 0
R: 70 G: 191 B: 222
#46BFDE

Imagery



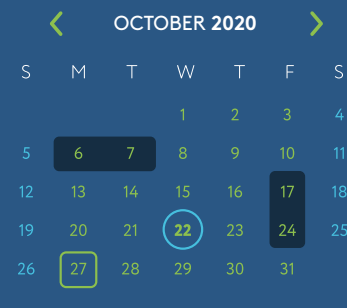
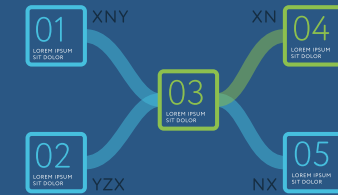
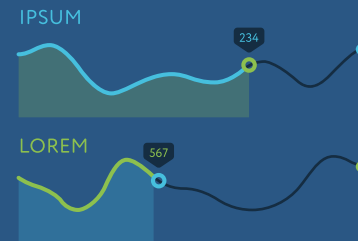
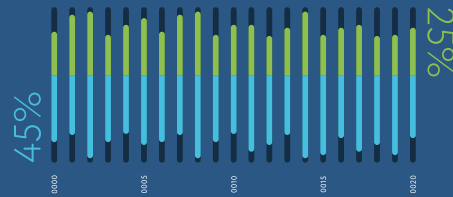
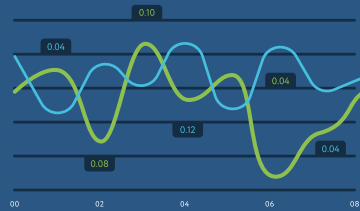
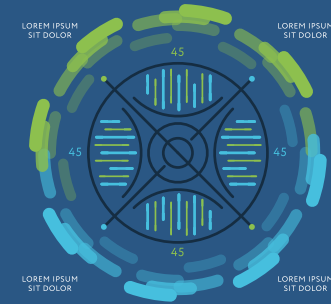
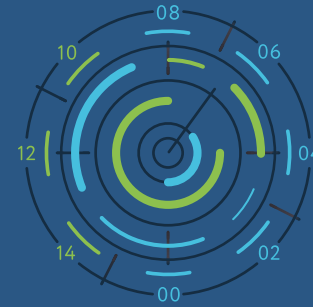
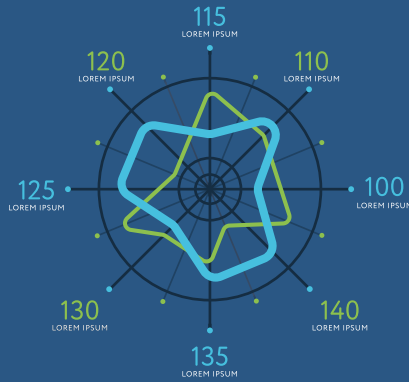
Perspective



People

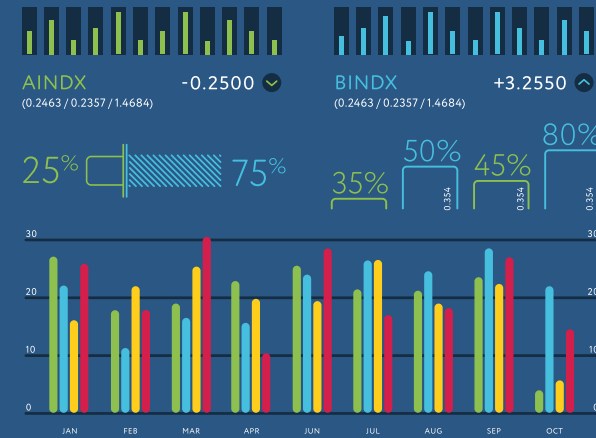


Data visualisation

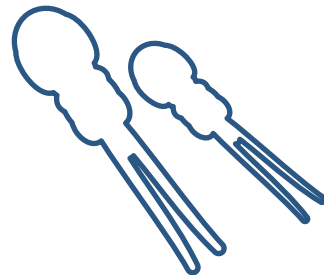
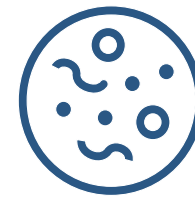
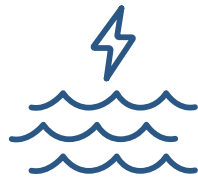
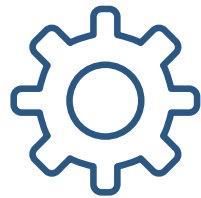


- LOREM IPSUM SIT DOLOR
- LOREM IPSUM SIT DOLOR
- LOREM IPSUM SIT DOLOR
- LOREM IPSUM SIT DOLOR

MAP OF LOREM



Icons





Brand examples



MIKE SPAIN
Head of SAMS Enterprise

T: +44 (0)1631 559 366
E: mike.spain@sams-enterprise.com
W: www.sams-enterprise.com

 **SAMS**
ENTERPRISE



SPECIALIST MARINE CONSULTANCY

Enabling Productive Oceans

info@sams-enterprise.com
+ 44 (0) 1631 559470
www.sams-enterprise.com



SEAFOOD SECURITY

ESSENTIAL SERVICES THAT INFORM INDUSTRY ON THE SAFEGUARDING OF HUMAN HEALTH.



HABs & Toxins

With much of our food coming from the sea, the monitoring of naturally occurring and man-made toxins in the sea, which can be ingested by fish and shellfish and absorbed by seaweeds, is of vital importance. Some of these toxins can be produced by Harmful Algal Blooms (HABs).

Our research underpins computer models and other risk assessment tools that provide the aquaculture industry with early warnings of HABs. Underpinned by this expertise, we make these pioneering methods available to aquaculture, regulators and the public.

We also provide an essential service to the seafood industry in gathering and analysing water samples to monitor the presence of toxic phytoplankton, to ensure the safe harvesting of seafood and to protect and preserve human health. Our toxic phytoplankton monitoring programme across Scottish shellfish growing areas for Food Standards Scotland is accredited to BS EN ISO17025.



FS 635849

We operate a Quality Management System that has gained BS EN ISO9001:2015 certification.

Our seafood security services:

- Toxic phytoplankton monitoring
- Environmental Impact Assessment support
 - Effluents
 - Waste disposal

- Laboratory analysis
 - Contaminants
 - Benthic
 - Seawater

- Biosecurity
 - Sanitary surveys

 **SAMS**
ENTERPRISE

Specialist
Marine
Consultancy

info@sams-enterprise.com
+ 44 (0) 1631 559470
www.sams-enterprise.com

Decommissioning
services:

- Marine mammal survey
- Underwater acoustic
Monitoring
- Marine growth
assessments
- Marine modelling
& surveys
- Hydrodynamics
- Environmental impact
assessment
- Marine spatial planning
- Biosecurity

MARINE ENERGY

 **SAMS**
ENTERPRISE

Specialist
Marine
Consultancy

info@sams-enterprise.com
+ 44 (0) 1631 559470
www.sams-enterprise.com

New
DEPOMOD

PRODUCT

New
DEPOMOD



New DEPOMOD Logo

This is the only logo format.

1.

New
DEPOMOD

3.

New
DEPOMOD

2.



4.



1. **On white**

2. **On Deep Ocean**

3. **Black only**

Only to be used on single colour designs (eg black and white newspaper job listing).

4. **White only**

Use on top of photos (eg on a promotional stand). If the white logo is not legible on top of the image, use a colour overlay to darken the image.

New DEPOMOD Colour palette

Primary colour palette



Deep Ocean

C: 68 M: 14 Y: 0 K: 63
R: 30 G: 82 B: 94
#1E525E



CTA Burnt Orange

C: 4 M: 64 Y: 84 K: 0
R: 231 G: 115 B: 52
#E77334



White

C: 0 M: 0 Y: 0 K: 0
R: 255 G: 255 B: 255
#FFFFFF



Dual branding

The full SAMS Enterprise logo should always be used with dual product branding. This should never be smaller than the product logo/logos adjacent.

The SAMS Enterprise background colour over rights the product logo background colour but the product imagery over rights the SAMS Enterprise imagery style.

**New
DEPOMOD**

 **SAMS**

ENTERPRISE

**New
DEPOMOD**

 **SAMS**

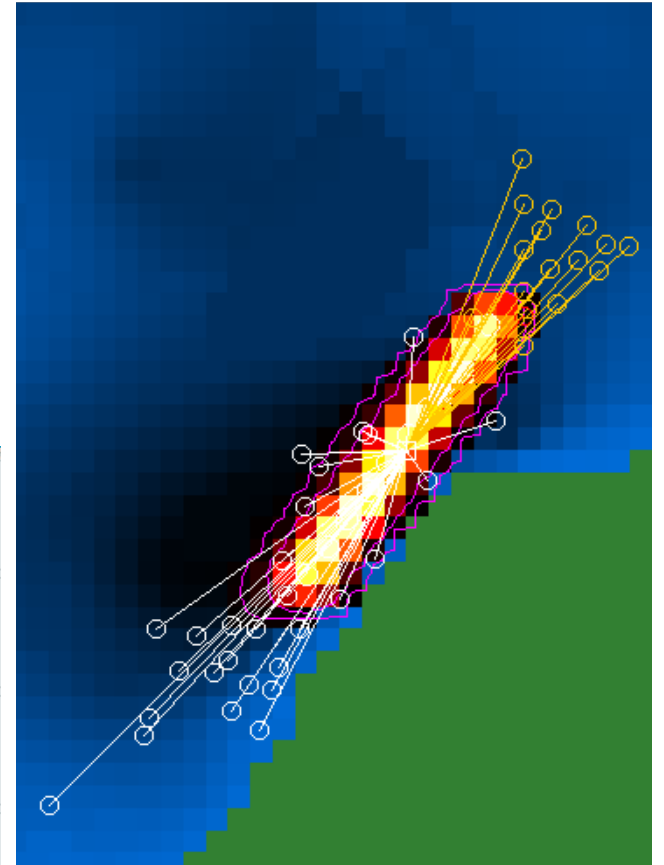
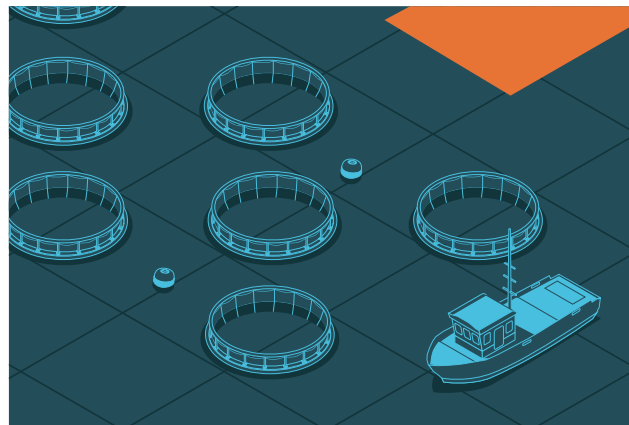
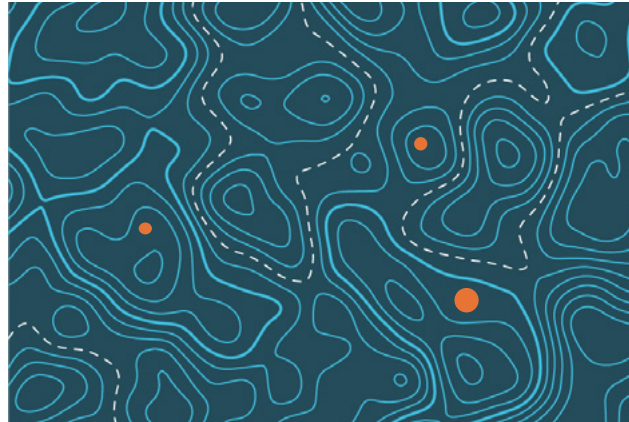
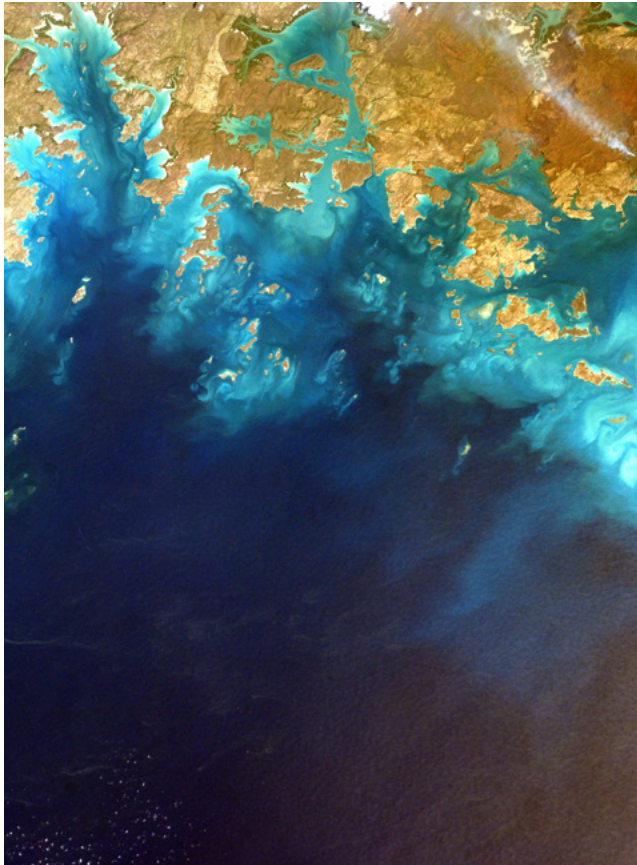
ENTERPRISE

**New
DEPOMOD**

 **SAMS**

ENTERPRISE

Imagery



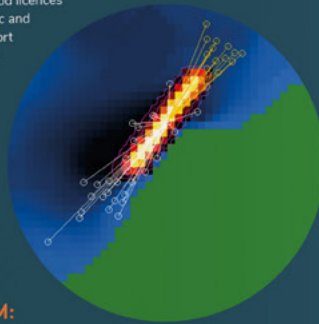
New DEPOMOD

Optimising aquaculture production

Developed by SAMS, NewDepomod is particle tracking modelling software, used to predict impacts of marine cage fish farm discharges on the seabed and its benthic macrofauna. Highly configurable, it optimises operation of aquaculture sites to match environmental capacity.

The software, together with our highly skilled, dedicated support team, helps fish farmers to sustainably meet production targets and expand operations, whilst safeguarding the sea and the seabed. It is currently prescribed by SEPA for fish farm development and is adaptable to varying marine environments including Mediterranean, tropics and fresh water.

We offer NewDepomod licences (commercial, academic and developer) with support and bespoke training programmes or we can run the software for you.



**FOR MORE INFORMATION,
CONTACT OUR NEWDEPOMOD TEAM:**

T: +44 (0) 1631 559470

E: depomod@sams-enterprise.com

W: www.sams-enterprise.com/depomod

SAMS ENTERPRISE PRODUCTS AND SERVICES

AQUACULTURE

KEY ASSETS:

Optimises stocking to meet regulatory requirements.

Allows for differing marine environments and fish species.

A realistic representation of complex tidal flows.

Configurable to specific site characteristics - accounts for variable bathymetry.

Suits both new and advanced users.

Flexible output options - informs benthic monitoring programme design.





Specialist Marine Consultancy

info@sams-enterprise.com
+ 44 (0) 1631 559470
www.sams-enterprise.com

New DEPOMOD

Optimises stocking to meet regulatory requirements.

Allows for differing marine environments and fish species.

A realistic representation of complex tidal flows.

Configurable to specific site characteristics - accounts for variable bathymetry.

Suits both new and advanced users.

Flexible output options - informs benthic monitoring

AQUACULTURE



Specialist Marine Consultancy

info@sams-enterprise.com
+ 44 (0) 1631 559470
www.sams-enterprise.com

SIMBA

PRODUCT
SIMBA



SIMBA Logo

This is the only logo format.

1.



SIMBA

2.



3.



SIMBA

4.



1. **On white**

2. **On Deep Ocean**

3. **Black only**

Only to be used on single colour designs (eg black and white newspaper job listing).

4. **White only**

Use on top of photos (eg on a promotional stand). If the white logo is not legible on top of the image, use a colour overlay to darken the image.

Dual branding

The full SAMS Enterprise logo should always be used with dual product branding. This should never be smaller than the product logo/logos adjacent.

The SAMS Enterprise background colour over rights the product logo background colour but the product imagery over rights the SAMS Enterprise imagery style.



SIMBA Colour palette

Primary colour palette



Deep Ocean

C: 68 M: 14 Y: 0 K: 63
R: 30 G: 82 B: 94
#1E525E



Bright Yellow

C: 0 M: 20 Y: 90 K: 0
R: 255 G: 205 B: 28
#FFCD1C



White

C: 0 M: 0 Y: 0 K: 0
R: 255 G: 255 B: 255
#FFFFFF



Imagery





SIMBA

Sea-Ice Mass Balance Array

Measuring temperatures, structures of snow, ice and water and sending the data in real time to your device, laptop or desktop computer.



SAMS Research Services has been developing and manufacturing SIMBA units for more than a decade, initially for our own polar research. This advanced commercial product can help customers who monitor sea and snow, and need reliable and detailed measurements at an affordable price. Sensors in the units are designed to withstand temperatures as low as minus 40 degrees Celsius and are contained within a box no larger than a briefcase.

SIMBA units have been deployed in locations around the world, including the Arctic and Antarctic regions, for more than seven years. In 2019, 18 devices were deployed in the €130 million project Multidisciplinary Observatory for the Study of Arctic Climate (MOSAIC).

The equipment is also under development for snow industries where it can be used as an avalanche prediction aid.

SNOW & ICE



Features:

- Low cost
- Light weight (20 kg)
- Remotely configurable
- Long battery life (>1 year)
- Fine spatial resolution (2 cm) for temperature gradients
- Ability to resolve interfaces (air-snow, snow-ice, ice-water)
- Web interface available for status monitoring and observing live data

SIMBA services:

- Monitoring ice or snow thickness, movement & temperature
- Flood predictions
- Ice road monitoring
- Avalanche prediction aid
- Polar region weather forecasting
- Monitoring sea ice conditions for transport and shipping





PRODUCT

Seaweed

Nursery | Academy | Farm

Seaweed Logos

Seaweed

NURSERY

Seaweed

ACADEMY

Seaweed

FARM

Seaweed Logos

Seaweed

NURSERY

Seaweed

ACADEMY

Seaweed

FARM

Dual branding

The full SAMS Enterprise logo should always be used with dual product branding. This should never be smaller than the product logo/logos adjacent.

The SAMS Enterprise background colour overrides the product logo background colour but the product imagery over rights the SAMS Enterprise imagery style.

Seaweed

NURSERY

 SAMS

ENTERPRISE

Seaweed

ACADEMY

 SAMS

ENTERPRISE

Seaweed

FARM

 SAMS

ENTERPRISE

Seaweed Colour palette

Primary colour palette



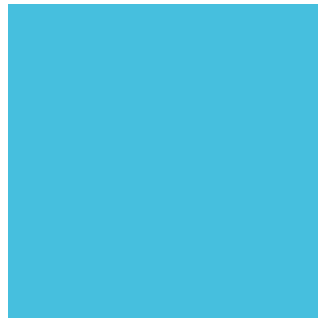
Deep Ocean

C: 68 M: 14 Y: 0 K: 63
R: 30 G: 82 B: 94
#1E525E



Light Green

C: 52 M: 0 Y: 84 K: 0
R: 141 G: 192 B: 78
#8DC04E

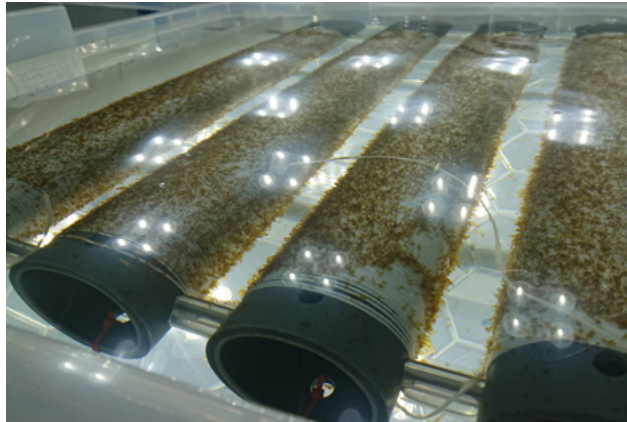
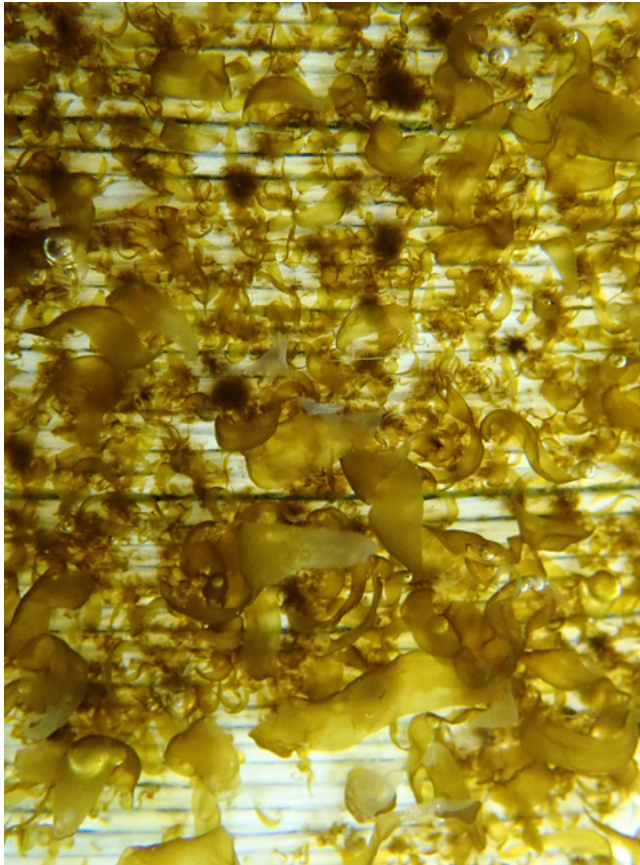


Wave Blue

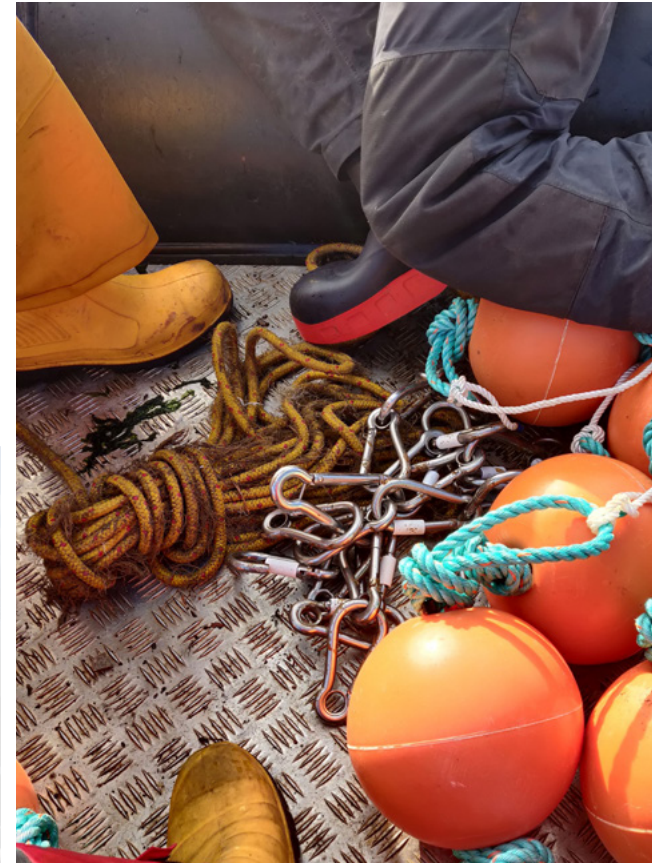
C: 65 M: 0 Y: 11 K: 0
R: 70 G: 191 B: 222
#46BFDE



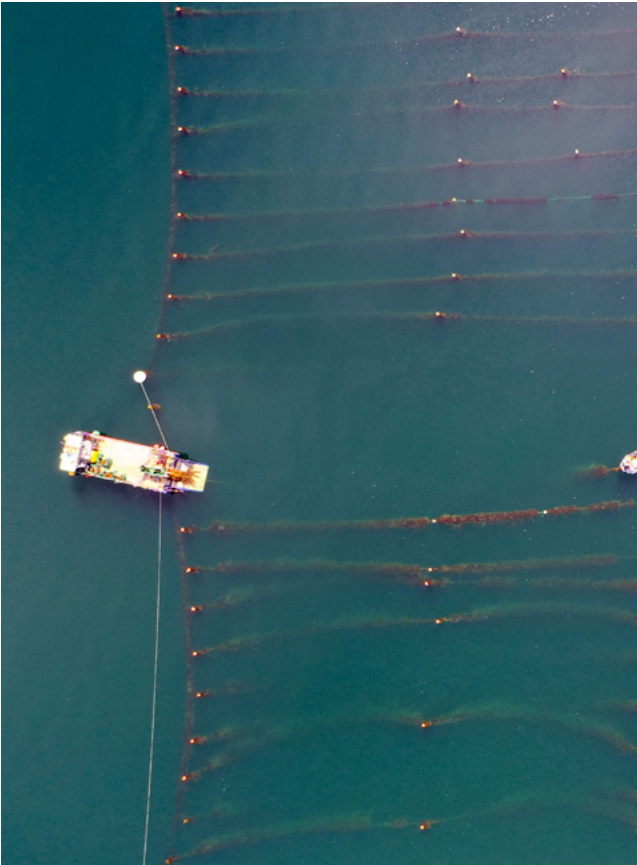
Nursery Imagery



Academy Imagery



Farm Imagery



Sector icons

These icons are never to be used as part of any product logo. These are kept for professional design assets in house only as part of professionally designed documents, web pages, adverts, Motion graphics, Video, Product stickers and mobile icons.

For examples please see below.
There use can be icons, faded or non faded background idents etc.



New DEPOMOD



SIMBA



Seaweed

Sector icons



New DEPOMOD



SIMBA



Seaweed